

The forecast for the entire Commonwealth is available on the US EPA AirNow website (<https://gispub.epa.gov/airnow/>). Select the Forecast tab and zoom into the area of interest or use the search box in the upper right corner. select “Forecast – Tomorrow” in the Contours box on the left side of screen. See Figure 1 below for an example showing an Air Quality forecast map from the AirNow website.

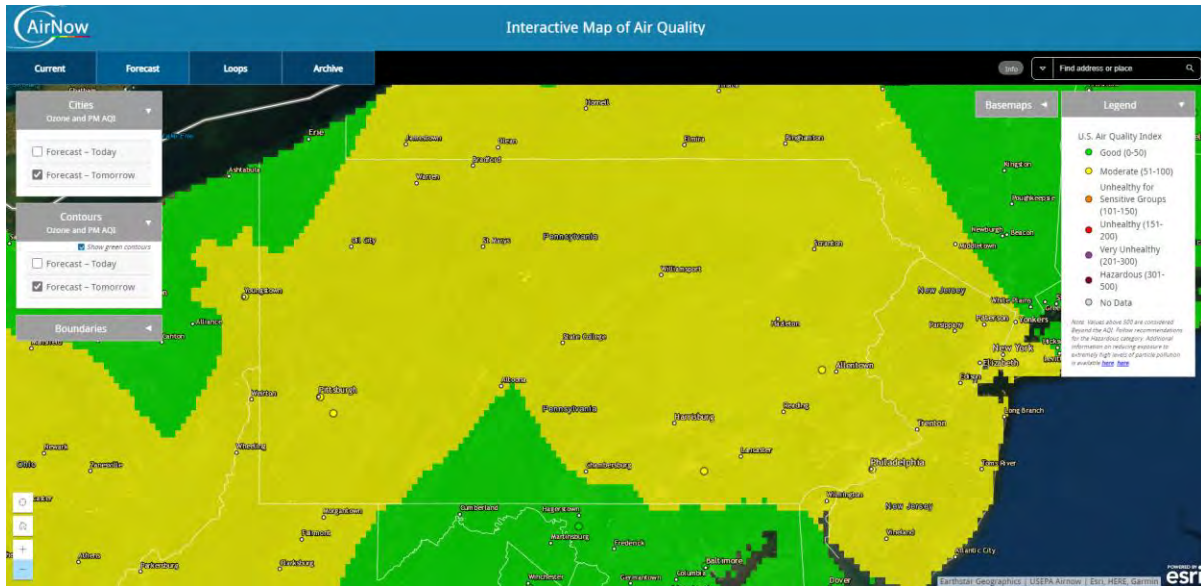
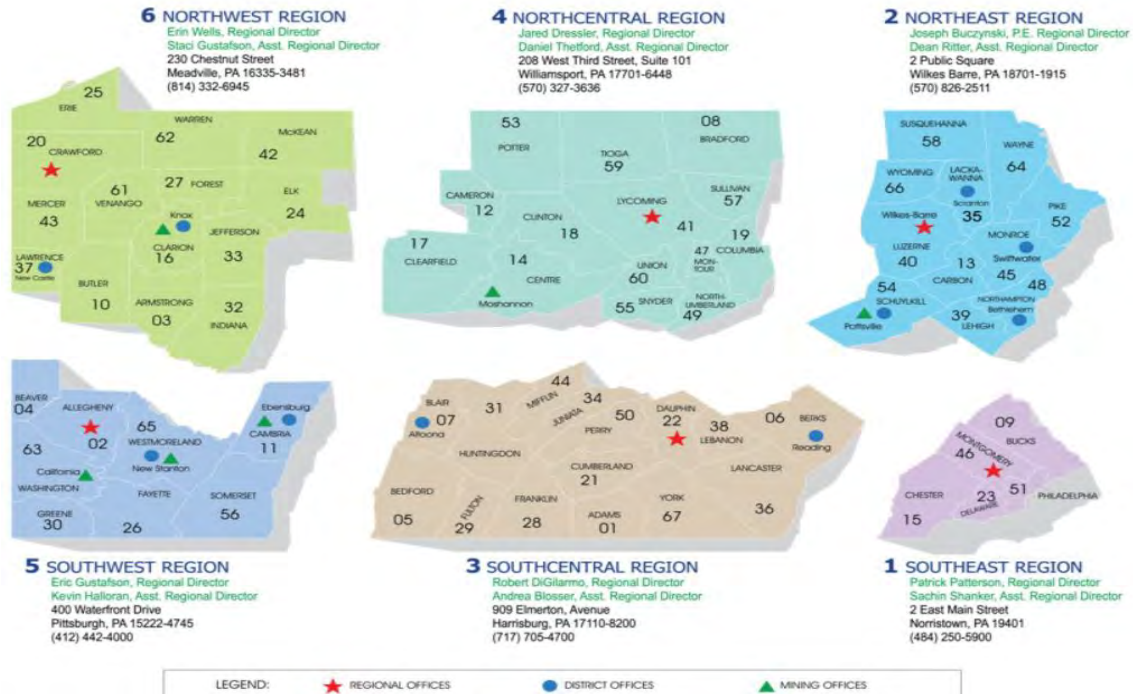


Figure 1: Example of an Air Quality Forecast for Pennsylvania on the AirNow website.

The forecasts are color coded based on the following Air Quality Index scale:

Color	Air Quality Index	Air Quality	Burning/No Burning
Green	0-50	Good	Burning
Yellow	51-100	Moderate	Burning
Orange	101-150	Unhealthy for Sensitive Groups	No Burning
Red	151-200	Unhealthy	No Burning
Purple	201-300	Very Unhealthy	No Burning
Maroon	>300	Hazardous	No Burning

**Commonwealth of Pennsylvania  
Department of Environmental Protection  
REGIONAL OFFICES**



To ensure awareness in case citizen calls are received, please notify the appropriate DEP regional office at least 24 hours prior of a prescribed fire through the [OnBase Electronic Forms Public Upload System](#).

REGION	CONTACT	PHONE NUMBER	EMAIL
1 SE	Helen Morris, AQ Env. Group Manager	(484) 250-7518	<a href="mailto:RA-EPSEROAQREPORTS@pa.gov">RA-EPSEROAQREPORTS@pa.gov</a>
2 NE	Andy Schweitzer, AQ Ops Chief	(570) 826-5547	<a href="mailto:aschweitze@pa.gov">aschweitze@pa.gov</a>
3 SC	Kelley Matty, AQ Ops Chief	(717) 705-4877	<a href="mailto:kmatty@pa.gov">kmatty@pa.gov</a>
4 NC	Andrea Ryder, AQ District Supervisor	(570) 321-6580	<a href="mailto:aryder@pa.gov">aryder@pa.gov</a>
5 SW	Stephen Wiedemer, AQ Ops Chief	(412) 442-4190	<a href="mailto:swiedemer@pa.gov">swiedemer@pa.gov</a>
6 NW	Lynn Khalife, AQ Ops Chief	(814) 332-6635	<a href="mailto:mkhalife@pa.gov">mkhalife@pa.gov</a>

DEP Central Office Contact: Lucas Hershey, Air Quality Program Specialist  
[luchershey@pa.gov](mailto:luchershey@pa.gov)  
Phone: (717) 787-7019

Bureau of Forestry Contact: Todd Breininge, Program Specialist  
[tbreininge@pa.gov](mailto:tbreininge@pa.gov)  
Phone: (717) 772-0255

## DEP Burn Plan & Burn Day Notification Instructions

The Department of Environmental Protection (DEP) has changed the notification process for burn plans and on the day of the burn. We will no longer be emailing them the plans and calling them as part of our burn day notifications. Effective February 3rd, all notifications will go through the [OnBase Electronic Forms Public Upload System](#)

### Instructions for the initial notification 25 working days prior to the burn

Once on the site click on the “Public Upload with Payment” link in the first paragraph. Next, click No for “is this a resubmittal?”

Enter Submitter Information.

Submitters Organization: Your name or organization

### Under Submission Information

Filter Submission Types by Program – Air Quality

Submission Type – Air Quality Report or Miscellaneous Submission (no payment)

DEP Program Area – Air Quality AQ

Request Type – Other

Permit #/Project # - Type in “Prescribed Burn Plan”

EIN – Leave this blank

The screenshot shows a web browser window with the URL <https://greenport.pa.gov/ePermitPublicAccess/PublicSubmission/Home>. The page title is "Public Upload". The form contains the following fields and options:

- Phone Number: (717) 773-8011
- Submission Information: A green header bar.
- Filter Submission Types by Program (optional): A dropdown menu with "selected" chosen.
- Submission Type - Select from the list\*: A dropdown menu with options: "Air Quality Report or Miscellaneous Submission (...)", "AIR QUALITY AQ", "OTHER", and "Prescribed Fire Plan". Red arrows point to the first four options.
- DEP Program Area: A dropdown menu with "AIR QUALITY AQ" selected.
- Request Type\*: A dropdown menu with "OTHER" selected.
- Permit #/Project #: A text input field with "Prescribed Fire Plan" entered.
- Applicant EIN: A text input field.
- Project Address: A green header bar.

At the bottom of the page, there is a footer for the Pennsylvania Department of Environmental Protection, Rachel Carson Building | 400 Market Street | Harrisburg, PA 17101. The system tray shows the date and time as 1:29 PM 2/3/2025.

## Project Address Information

Enter Project Address Information. If you don't have a physical address, just get it close.

County/Municipal/Region: If it is a burn plan submittal just use the County/Municipality that has the most acreage in it. The important thing is to make sure that it goes to the correct DEP Regional Office (circled below).

County(ies)	Municipality(ies)	Is Primary?	Region(s)	Edit	Delete
Lehigh	North Whitehall Township	N	Northeast Regional Office		

Attach the burn plan and click Submit.

## **Instructions for the burn day notification**

Do the same thing as above and click on the "Public Upload with Payment" link in the first paragraph. Next, click **No** for "is this a resubmittal?"

The only changes in the first section from the initial submission will be:

Permit #/Project # - Type in "Prescribed Burn Notification"

## Project Address Information

If the burn unit crosses County/Municipalities click on the Add County/Municipality/Region link to add the additional County/Municipalities.

Attach the burn plan to the submission and let them know the number of acres that are to be burned and how many units.

## **Additional Notification for Allegheny County**

The Allegheny County Health Department requires an open burning permit for all burns in the county. To apply, applicants must use the [ACHD Open Burn Portal Link](#) to apply for open burning permits. If you have any questions regarding prescribed burning in Allegheny County, please call 412-578-8120.